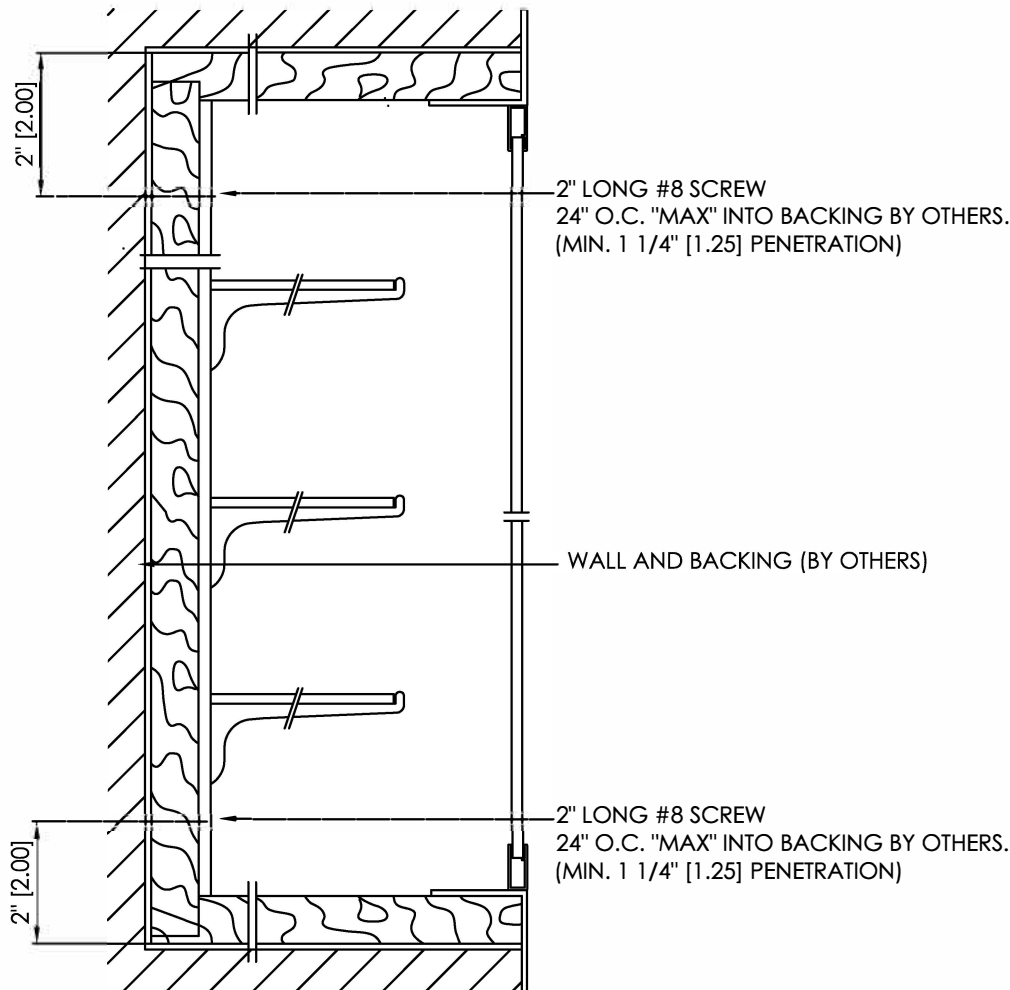


HDS / INSTALLATION INSTRUCTIONS: HINGED DISPLAY CASE INSTALLATION

HDS INSTALLATION INSTRUCTIONS:

1. CLEAN OPENING BEFORE INSTALLING HDS UNIT AND MAKE SURE THERE ISN'T ANY DEBRIS OF ANY KIND.
2. ANY UNIT(S) EXCEEDING 6'-0" IN LENGTH, IS RECOMMENDED THAT YOU INSTALL THIS UNIT WITH AN ADDITIONAL PERSON IT COULD BE A LITTLE TOO HEAVY TO LIFT FOR A SINGLE PERSON.
3. SLIDE INTO OPENING VERY GENTLY UNTIL IT TOUCHES THE BACK OF THE OPENING.
4. ONCE THE UNIT IS INSIDE THE OPENING PREPARE TO ANCHOR THE UNIT BY ANCHORING THE TOP PORTION OF THE UNIT AT ABOUT 2" FROM THE TOP DOWN, USE A #8-2" SCREW AND ANCHOR THROUGH THE STANDARD FOR SHELVES.
5. PREPARE TO ANCHOR THE BOTTOM USING SAME TYPE OF SCREW #8- 2" AT ABOUT 2" FROM THE BOTTOM UP. (SEE DRAWING).
6. ONCE THE CASE HAS BEEN PROPERLY INSTALLED, HANG THE SHELF BRACKETS ON THE STANDARDS AND HANG ON DESIRED LOCATION HEIGHT.
7. ONCE ALL GLASS SHELF BRACKETS ARE IN PLACE PREPARE TO PUT THE GLASS SHELVES.
8. CLEAN GLASS WITH WINDOW CLEANER OR WINDEX, AND UNIT IS READY FOR USE.
9. NOTE: UNIT(S) WITH LIGHTS CHECK PLANS, OR CONTACT GENERAL CONTRACTOR FOR SPECIFIC WIRING AND CONNECTIONS.



(PAGE 1 OF 1)