

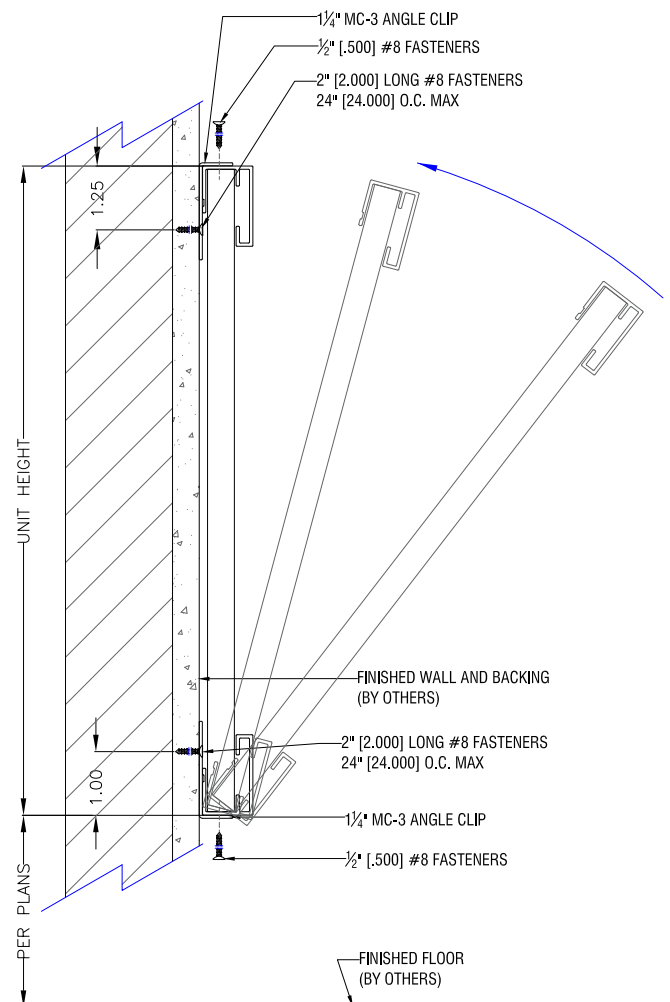
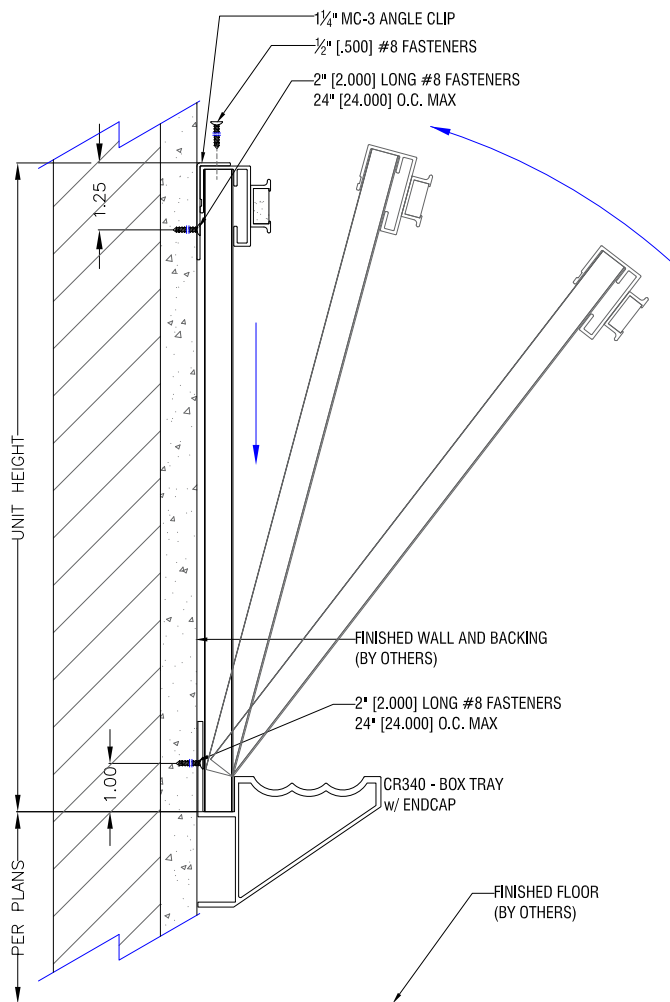
Wide Trim System ^(WTS)

Writanium® Porcelain Markerboards, Chalkboards, & Tackboards

INSTALLATION INSTRUCTIONS

NOTES:

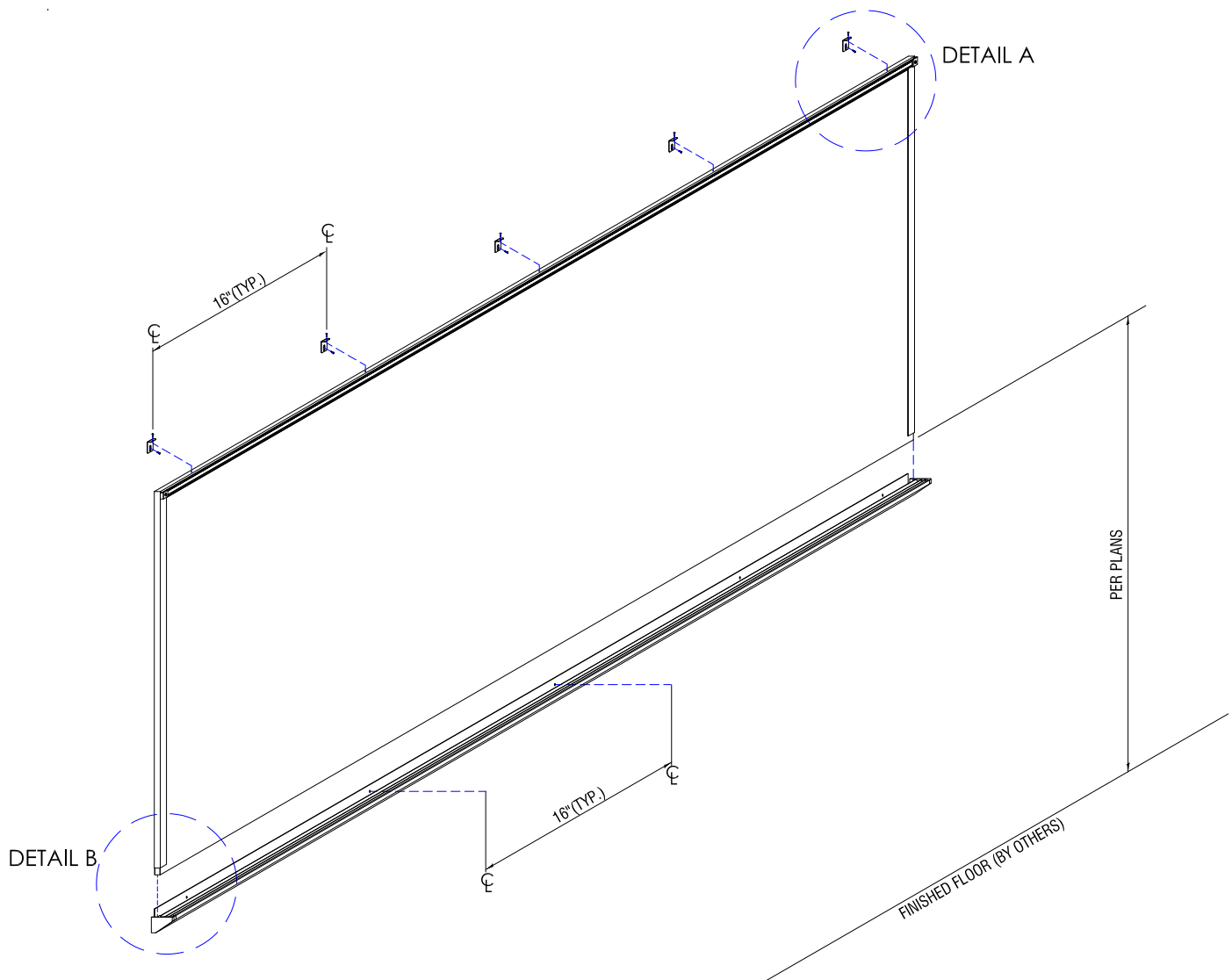
1. Adhesive is recommended behind all tackboards.
2. Backing must be located for successful installation.
3. Fastener type shall be determined by wall condition.
4. Contact manufacturer for fastener recommendation.



Wide Trim System ^(WTS)

Writanium® Porcelain Markerboards, Chalkboards, & Tackboards

INSTALLATION INSTRUCTIONS



Wide Trim System ^(WTS)

Writanium® Porcelain Markerboards, Chalkboards, & Tackboards

INSTALLATION INSTRUCTIONS

