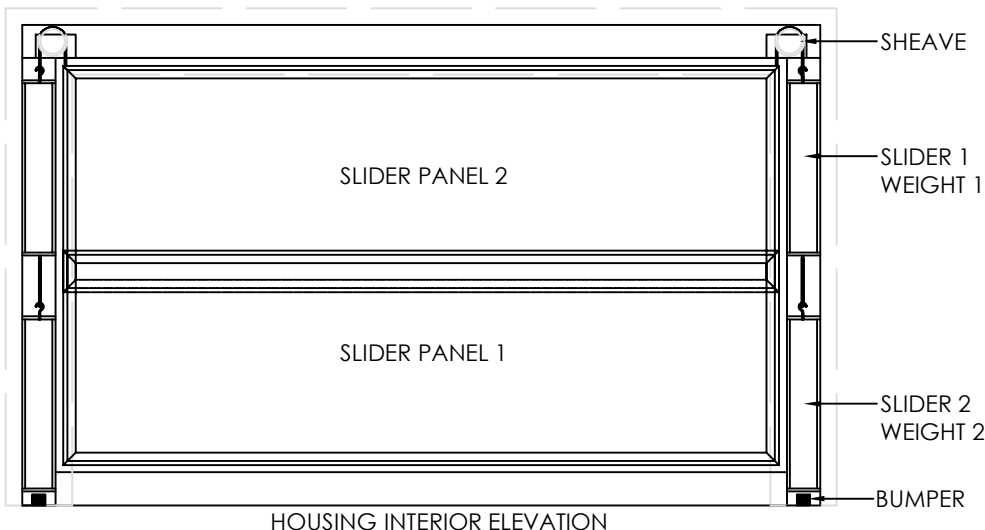
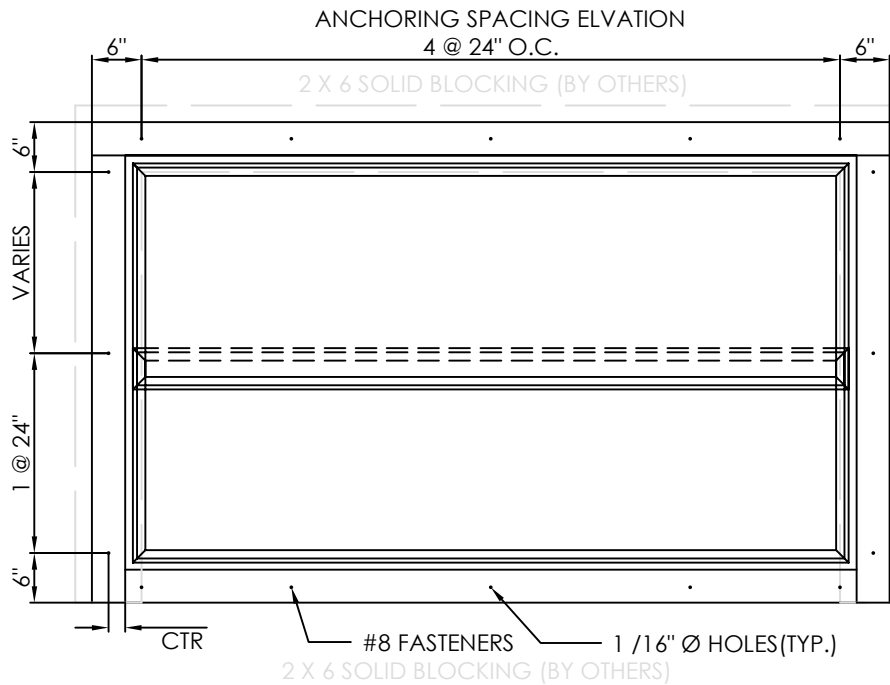




# WVS / INSTALLATION INSTRUCTIONS: HOUSING INSTALLATION

## WVS / INSTALLATION INSTRUCTIONS: VERTICAL SLIDER HOUSING INSTALLATION

1. OPEN CRATE VERIFY THAT NUMBER OF SLIDERS ARE CORRECT UNIT. SHOULD INCLUDE 2EA METAL WEIGHTS PER SLIDER UNIT.
2. MEASURE AND SNAP CHALKLINE FOR PROPER LOCATION OF FIXED BACK PANEL. FIXED PANEL IF ANY SHOULD BE INSTALLED FIRST.
3. PRE-ASSEMBLE HOUSING UNIT PRIOR TO WALL INSTALLATION.
4. PRE-DRILL HOLES ON BACK OF THE UNIT PRIOR TO INSTALLATION (SEE ELEVATION) FOR HOLE REQUIREMENTS. WHEN DRILLING PILOT HOLES ELEVATE UNIT WITH WOOD BACKING TO AVOID SEVERE DAMAGE TO FINISH FLOOR.
5. ONCE UNIT HAS BEEN PRE-ASSEMBLED ON THE FLOOR PICK UP WITH 2 PEOPLE SIMULTANEOUSLY ON TO WALL; ANCHOR TOP OF THE UNIT FIRST.
6. ONCE THE TOP HAS BEEN ANCHORED, ADJUST UNIT AND CHECK WITH A BUBBLE LEVEL TO MAKE SURE IT'S SQUARED FROM THE INSIDE WHERE THE SLIDERS ARE LOCATED.
7. ONCE THE UNIT HAS BEEN COMPLETELY CHECKED, FINISH ANCHORING THE REST OF THE ALUMINUM HOUSING.
8. AFTER UNIT HAS BEEN PROPERLY INSTALLED INSPECT AND REMOVE ALL DEBRIS AND INSPECT SHEAVES ON BOTH SIDES AND CLEAN AND LUBRICATE PRIOR TO INSTALLING ANY SLIDERS.
9. SOLID BLOCKING RECOMMENDED (BY OTHERS) PERIMETER OF UNIT.
10. FASTENERS # 8 SCREWS @ 24" O.C. (SEE ELEVATION) FOR FASTENERS RECOMMENDED LOCATIONS.
11. AFTER HOUSING HAS BEEN PROPERLY INSTALLED SEE PAGE 2 OF 2 FOR THE INSTALLATION OF THE SLIDER PANELS.
12. INSTALL (OPTIONAL) FIXED BACK PANEL IF APPLICABLE.





## WVS / INSTALLATION INSTRUCTIONS: SLIDER PANELS INSTALLATION

### WVS / INSTALLATION INSTRUCTIONS: VERTICAL SLIDER HOUSING INSTALLATION

1. MARKERBOARDS PANELS CONSIST OF 2 EACH STEEL WEIGHTS AND CABLES ONE FOR EACH SIDE.
2. INSTALL SLIDER PANEL #2 FIRST; START BY SLIDING STEEL WEIGHT INTO TRACK #2 AND RUN WIRE THROUGH THE TOP HOLE OF THE HOUSING OVER THE SHEAVE AND SECURE PANEL FROM THE TOP. REPEAT THE SAME PROCESS FOR THE OPPOSITE SIDE.
3. ONCE PANEL HAS PROPERLY BEEN SECURED TEST THE PANEL BY MOVING IT UP AND DOWN. CLEAN THE SECOND TRACK AND THE WEIGHTS SO THAT THE GUIDE CAN SLIDE WITHOUT ANY INTERFERENCE THROUGH THE TRACK.
4. THE INSTALLATION OF PANEL #1 IS THE SAME AS THE SECOND REPEAT THE SAME PROCESS WHEN INSTALLING THE LAST SLIDER PANEL.
5. ONCE SLIDER PANELS HAVE BEEN PROPERLY INSTALLED; INSERT ALUMINUM VERTICAL COVERS.
6. INSTALL OPTIONAL MAPRAIL.
7. EXCESSIVE MAGNETIC AIDS ON WRITING SURFACES MAY CAUSE ADDITIONAL WEIGHT ON SLIDER PANEL AND IT MAY CAUSE SLIDER PANEL TO DROP.

