

Display Cases: Trophy and Display Case with Hinged Glass Doors [HWS]



For Wall Mounted Trophy Cases with Hinged Glass Doors

- Hinged doors are made of 1/4" tempered glass.
- All units are shipped fully assembled and ready to hang.
- These attractive Display and Trophy Cases have repositionable shelving that will accommodate any accolade.
- Features a continuous stainless steel piano hinge.
- Wood box made of 3/4" plywood with birch veneer with clear natural finish. Additional finish options available.

Suggested Specifications

PART 1: *general*

1.1 SECTION INCLUDES

- A. Vinyl Cork Tackboard Trophy Case.

1.2 RELATED SECTIONS

- A. Section 06100 – Wood or Steel Blocking.
- B. Section 09000 – Gypsum Wall Board.
- C. Section 09720 – Vinyl Wall Coverings.
- D. Section 09900 – Paints and Coatings.

1.3 REFERENCES

- A. ASTM B221 – Standard Specification for Aluminum and Aluminum-Alloy Extruded Bars, Rods, Wire, Shapes, and Tubes.
- B. ASTM E84 – Test Method for Surface Burning and Characteristics of Building Materials.

1.4 SUBMITTALS

- A. Submit products and samples under provisions of Section 01300.
- B. Product Data: Provide technical data for products specified. Include Material Safety Data Sheets, when applicable.
- C. Shop Drawings: Provide shop drawings for each type of visual display board specified including section details indicating trim, face, core and backing materials, dimensions, joint locations and special anchor details.
- D. Color Samples: Submit set of color chips displaying manufacturer's full range of colors and finishes.
- E. Product Samples: Submit samples not less than twelve inches square and framed on two adjacent sides, to illustrate materials, finish, color, and configuration of each type of visual display board required.
- F. Care and Maintenance Data: Provide data on cleaning requirements, stain removal, and recommended maintenance precautions.

1.5 DELIVERY, STORAGE AND HANDLING

- A. Comply with manufacturer's instructions for handling and storage of Trophy Cases.

1.6 PROJECT CONDITIONS

- A. Field measure prior to fabrication to ensure proper fit.
- B. General contractor to maintain proper climate before, during and after installation.

1.7 WARRANTY

- A. Submit manufacturer's "One Year" warranty, stating that under normal usage and maintenance, and when installed in accordance with manufacturer's instructions and recommendations, Trophy Cases are warranted for one year.
- B. Warranty shall cover replacement of defective workmanship and product defects. Warranty does not cover the cost of removal or reinstallation.

PART 2: *products*

2.1 MANUFACTURERS

- A. Provide visual display boards as manufactured by Platinum Visual Systems™, Corona, California. Tel.: (800)498-2990 Fax: (951)817-9900. Email: info@pvsusa.com. Website: www.pvsusa.com.
- B. Substitutions: See Section 01600 – Product Requirements.

2.2 TROPHY CASE MATERIALS

- A. Vinyl Face Sheets: Vinyl surface will be Type II self-healing, weighing not less than 21 ounces per lineal yard. Pattern to be a Harborweave.
 - 1. Vinyl shall be washable and mildew resistant.
- B. Core Material: 1/4" natural cork.
- C. Wood Box Material: 3/4" plywood with Birch veneer.
- D. Metal Trim: 6063 aluminum alloy with a T5 temper.
- E. Glass: 1/4" tempered glass.
- F. Adhesive: As recommended by manufacturer for project conditions.

2.3 TROPHY CASE WITH HINGED GLASS DOORS

- A. Provide Trophy Cases with Hinged Glass Doors for project from manufacturer's HWS Series.
 - 1. Metal trim and accessories: HWS Series thick wall aluminum extrusions with clear satin anodized finish.
 - a. Housing TU220: One piece aluminum 2" x 2" tube perimeter housing.
 - b. Door Stop CH200: One piece aluminum channel at top and bottom.
 - c. Door Frame CH350: Standard channel frame with 1 3/8" face with plastic seal surrounding glass.
 - d. Hinge: Continuous stainless steel piano hinge.
 - e. Lock: Tumbler lock.
 - 2. Back Panel: Vinyl cork tackboard standard.
 - 3. Glass Doors and Shelves: 1/4" tempered glass.
 - a. Doors: 4', 5' and 6' widths to have two doors, 8' and 10' widths to have three doors, 12' width to have four doors and 16' width to have five doors.
 - b. Shelves: Two 6", 8", 10" or 12" deep rows of glass shelves with pencil edge finish and brackets with adjustable standards.
 - 4. Glass Side Lights: 1/4" tempered glass.
 - 5. Wood Box: 3/4" plywood with Birch veneer with clear natural finish. Optional finishes available.
 - 6. Size: 4' high x 4', 5', 6', 8', 10', 12', or 16' wide x 12", 16" or 24" deep.
 - 7. Color: As selected from manufacturer's standard colors.
 - 8. Optional: Base and Upper Cornice.

2.4 FABRICATION

- A. Laminate facing sheet and backing sheet to core material under pressure, using manufacturer's recommended adhesive.
- B. Provide factory-assembled visual display boards, except where sizes demand partial field assembly.

PART 3: *execution*

3.1 EXAMINATION

- A. Verify that substrates are properly prepared to receive Trophy Cases. Do not begin installation until unsatisfactory conditions have been corrected.

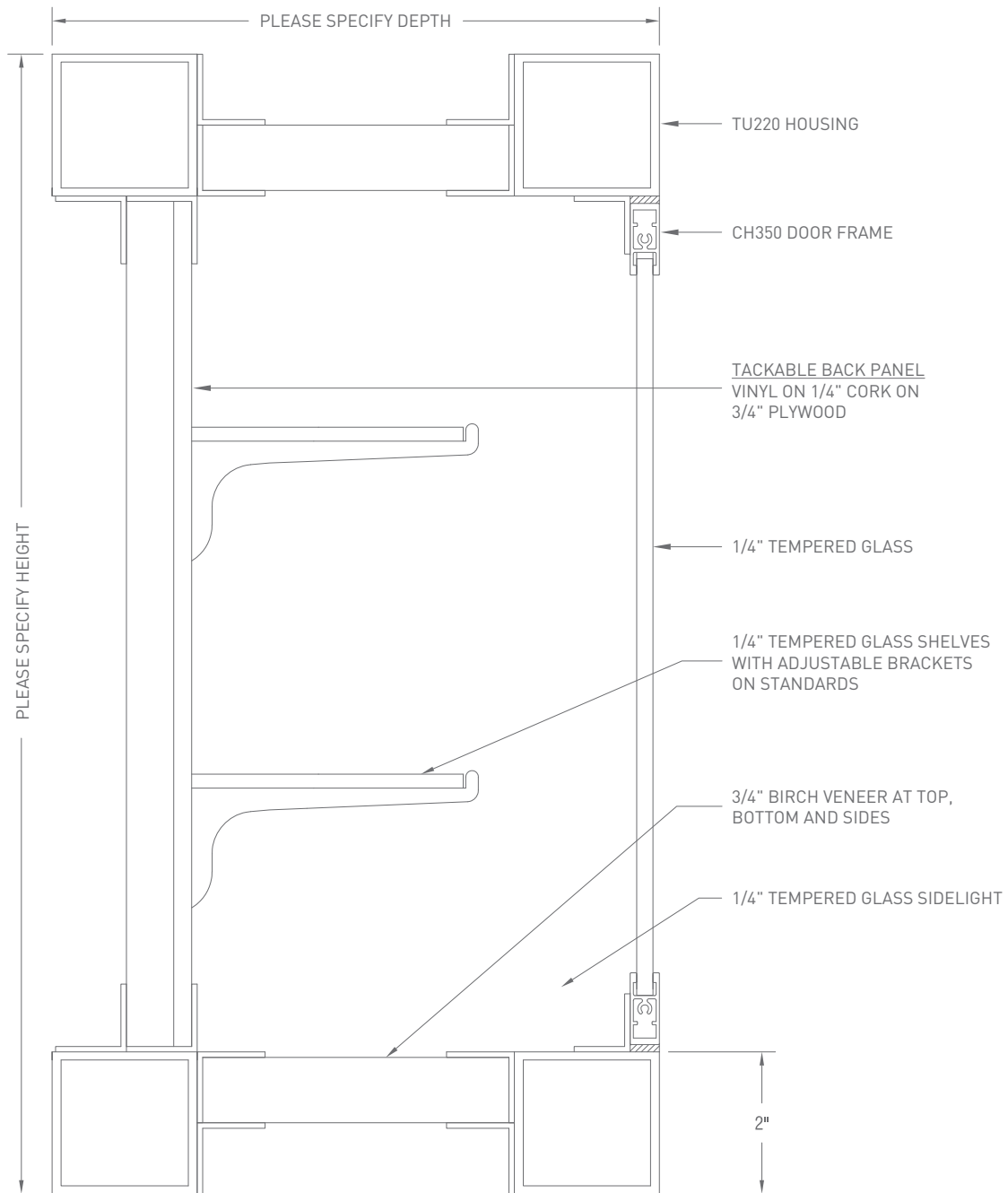
3.2 INSTALLATION

- A. Comply with manufacturer's installation instructions.
- B. Install visual display boards level and plumb, keeping perimeter trim aligned in accordance with manufacturer's recommendations.

3.3 ADJUSTING AND CLEANING

- A. Verify that all accessories are installed as required for each unit.
- B. Upon completion of installation, clean surfaces and trim in accordance with manufacturer's recommendations, leaving all materials ready for use.

HWS: Specifications



PLATINUM
LET'S CREATE TOGETHER.™

1451 E. Sixth Street, Corona, CA 92879
800 498 2990 | 951 817 2200 | FAX 951 817 9900
www.pvsusa.com | info@pvsusa.com