

Recessed Display Case ^(HDS) with Hinged Glass Doors



FOR RECESSED DISPLAY CASES with Hinged Glass Doors and Adjustable Glass Shelves

- Enhance your space with these attractive display cases, featuring repositionable shelving capable of accommodating any accolade and complemented by tackable back panels.
- The hinged doors are constructed from 1/4" tempered glass for durability, ensuring the displays are securely enclosed. Additionally, a continuous stainless steel piano hinge provides a smooth operation and longevity.
- Wood box features birch veneer or a variety of HPL finishes, providing versatility to suit your aesthetic preferences.

Suggested Specifications

Part 1: General

1.1 Section Includes

- A. Vinyl Cork Tackboard Bulletin Case

1.2 Related Sections

- A. Section 06100 – Wood or Steel Blocking
- B. Section 09000 – Gypsum Wall Board
- C. Section 09720 – Vinyl Wall Coverings
- D. Section 09900 – Paints and Coatings



1.3 References

- A. ASTM B221 – Standard Specification for Aluminum and Aluminum-Alloy Extruded Bars, Rods, Wire, Shapes, and Tubes.
- B. ASTM E84 – Test Method for Surface Burning and Characteristics of Building Materials.

1.4 Submittals

- A. Submit products and samples under provisions of Section 01300.
- B. Product Data: Provide technical data for products specified. Include Material Safety Data Sheets, when applicable.
- C. Shop Drawings: Provide shop drawings for each type of visual display board specified including section details indicating trim, face, core and backing materials, dimensions, joint locations and special anchor details.
- D. Color Samples: Submit set of color chips displaying manufacturer's full range of colors and finishes.
- E. Product Samples: Submit samples not less than twelve inches square and framed on two adjacent sides, to illustrate materials, finish, color, and configuration of each type of visual display board required.
- F. Care and Maintenance Data: Provide data on cleaning requirements, stain removal, and recommended maintenance precautions.

1.5 Delivery, Storage, and Handling

- A. Comply with manufacturer's instructions for handling and storage of Display Cases.

1.6 Project Conditions

- A. Field measure prior to fabrication to ensure proper fit.
- B. General contractor to maintain proper climate before, during and after installation.

1.7 Warranty

- A. Submit manufacturer's "One Year" warranty, stating that under normal usage and maintenance, and when installed in accordance with manufacturer's instructions and recommendations, Display Cases are warranted for one year.
- B. Warranty shall cover replacement of defective workmanship and product defects. Warranty does not cover the cost of removal or reinstallation.

Part 2: Products

2.1 Manufacturers

- A. Provide visual display boards as manufactured by Platinum Visual Solutions, Corona, California.
Tel: (800)498-2990. Fax: (951)817-9900. Email: info@pvsusa.com. Website: www.pvsusa.com
- B. Substitutions: See Section 01600 – Product Requirements

2.2 Recessed Display Case Materials

- A. Vinyl Face Sheets: Vinyl surface will be Type II self-healing, weighing not less than 21 ounces per lineal yard. Pattern to be a Harborweave.
 - 1. Vinyl shall be washable and mildew resistant
- B. Core Material: 1/4" natural cork underlayment
- C. Wood Box Material: 3/4" plywood with Birch veneer
- D. Metal Trim: 6063 aluminum alloy with a T5 temper
- E. Glass: 1/4" tempered glass
- F. Adhesive: As recommended by manufacturer for project conditions

2.3 Recessed Display Case with Hinged Glass Doors

- A. Provide Recessed Display Cases with Hinged Glass Doors for project from manufacturer's HDS Series
 - 1. Metal trim and accessories: HDS Series thick wall aluminum extrusions with clear satin anodized finish.
 - a. Housing AT220: One piece aluminum 2" x 2" perimeter closure angle
 - b. Door Stop CH200: One piece aluminum channel at top and bottom
 - c. Door Frame CH350: Standard channel frame with 1 3/8" face with plastic seal surrounding glass
 - d. Hinge: Continuous stainless steel piano hinge
 - e. Lock: Tumbler lock
 - 2. Back Panel: Vinyl cork tackboard standard
 - 3. Glass Doors and Shelves: 1/4" tempered glass
 - a. Doors: 4', 5' and 6' widths to have two doors, 8' and 10' widths to have three doors, 12' width to have four doors and 16' width to have five doors
 - b. Shelves: Two 6", 8", 10" or 12" deep rows of glass shelves with pencil edge finish and adjustable brackets on standards
 - 4. Wood Box: 3/4" plywood with Birch veneer with clear natural finish. Depth to be 12", 16" or 24". Optional finishes available
 - 5. Size: 4' high x 4', 5', 6', 8', 10', 12', or 16' wide x 12", 16" or 24" deep
 - 6. Color: As selected from manufacturer's standard colors
 - 7. Light: Optional fluorescent light available

2.4 Fabrication

- A. Laminate facing sheet and backing sheet to core material under pressure, using manufacturer's recommended adhesive.
- B. Provide factory-assembled visual display boards, except where sizes demand partial field assembly.

Part 3: Execution

3.1 Examination

- A. Verify that substrates are properly prepared to receive Display Cases. Do not begin installation until unsatisfactory conditions have been corrected.

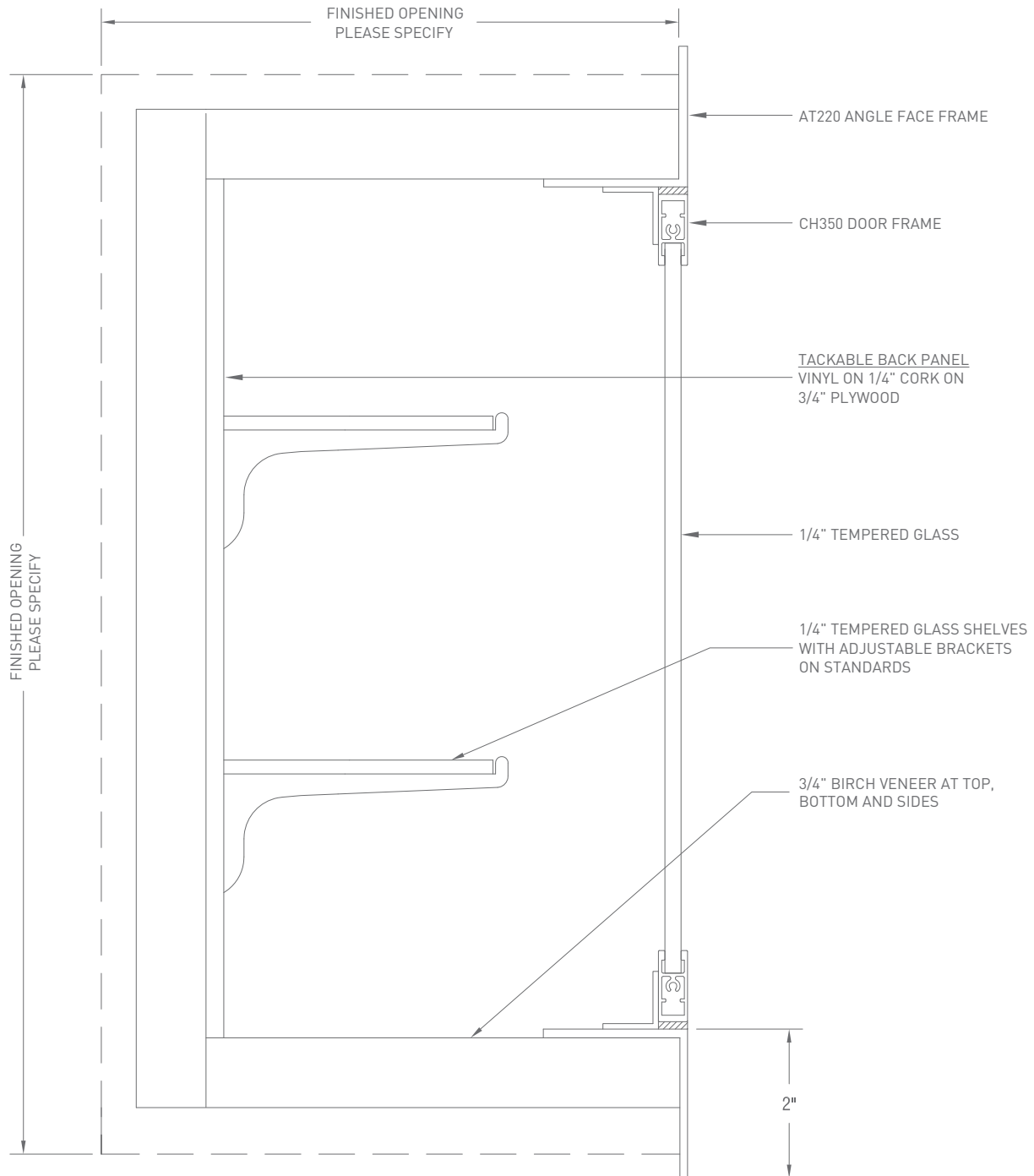
3.2 Installation

- A. Comply with manufacturer's installation instructions.
- B. Install visual display boards level and plumb, keeping perimeter trim aligned in accordance with manufacturer's recommendations.

3.3 Adjusting and Cleaning

- A. Verify that all accessories are installed as required for each unit.
- B. Upon completion of installation, clean surfaces and trim in accordance with manufacturer's recommendations, leaving all materials ready for use.

HDS: Specifications





Platinum
VISUAL SOLUTIONS

1451 E. Sixth Street, Corona, CA 92879
800.498.2990 | 951.817.2200 | FAX 951.817.9900
info@pvsusa.com | www.pvsusa.com